

# The ride has already started

Understanding AI and shaping what comes next



**Rommy van de Pol**  
Innovation & AI @ nlmttd

[rommy@nlmttd.com](mailto:rommy@nlmttd.com)

Sit down if you used Google Maps to get here.

Sit down if Spotify recommended you  
something you actually liked.

Sit down if your email has ever filtered out spam,  
without you asking.

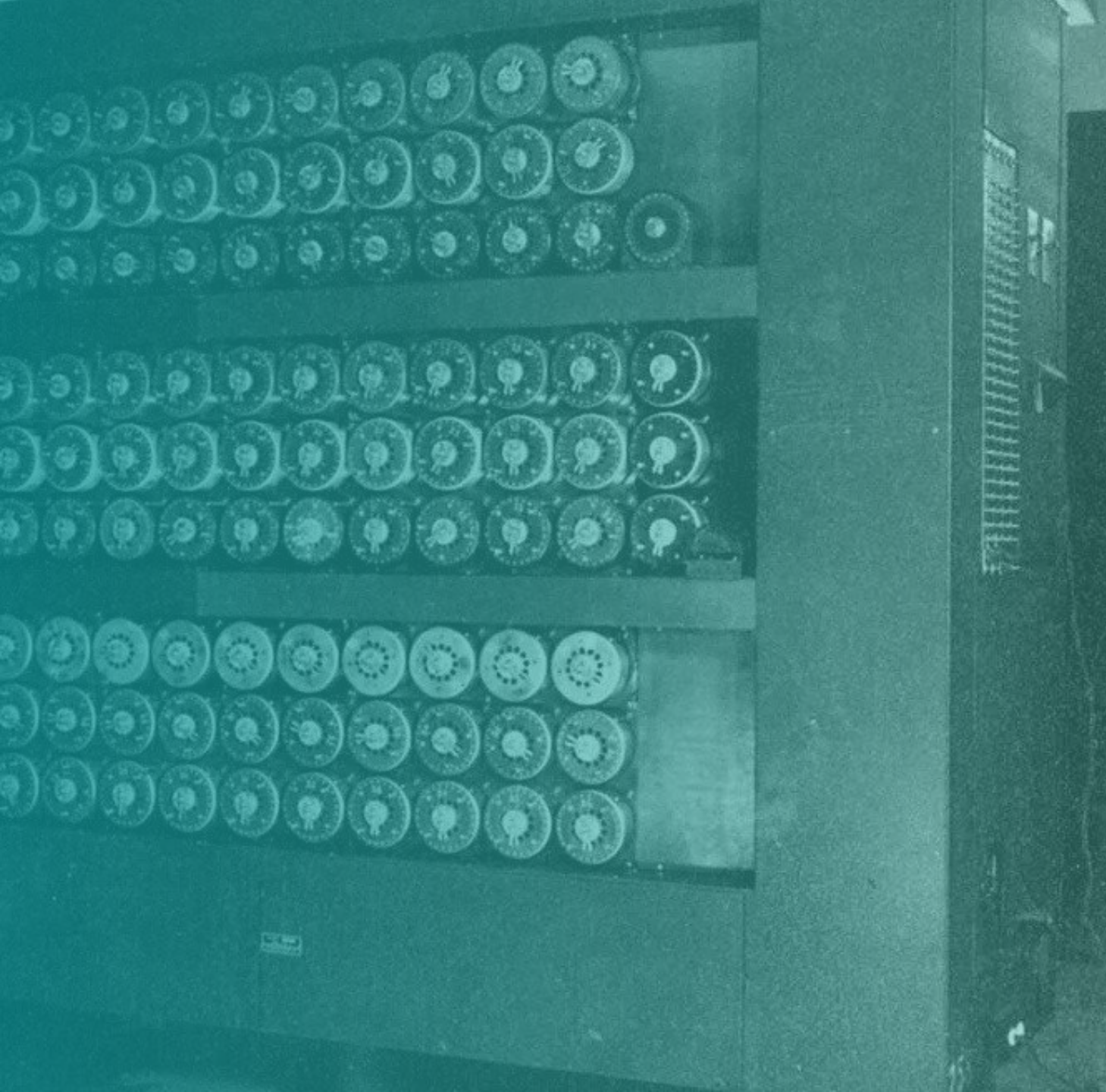
Sit down if you use face  
recognition to unlock your phone.

**Welcome to Artificial Intelligence.**

**You're already using it.**

THIS IS 1999

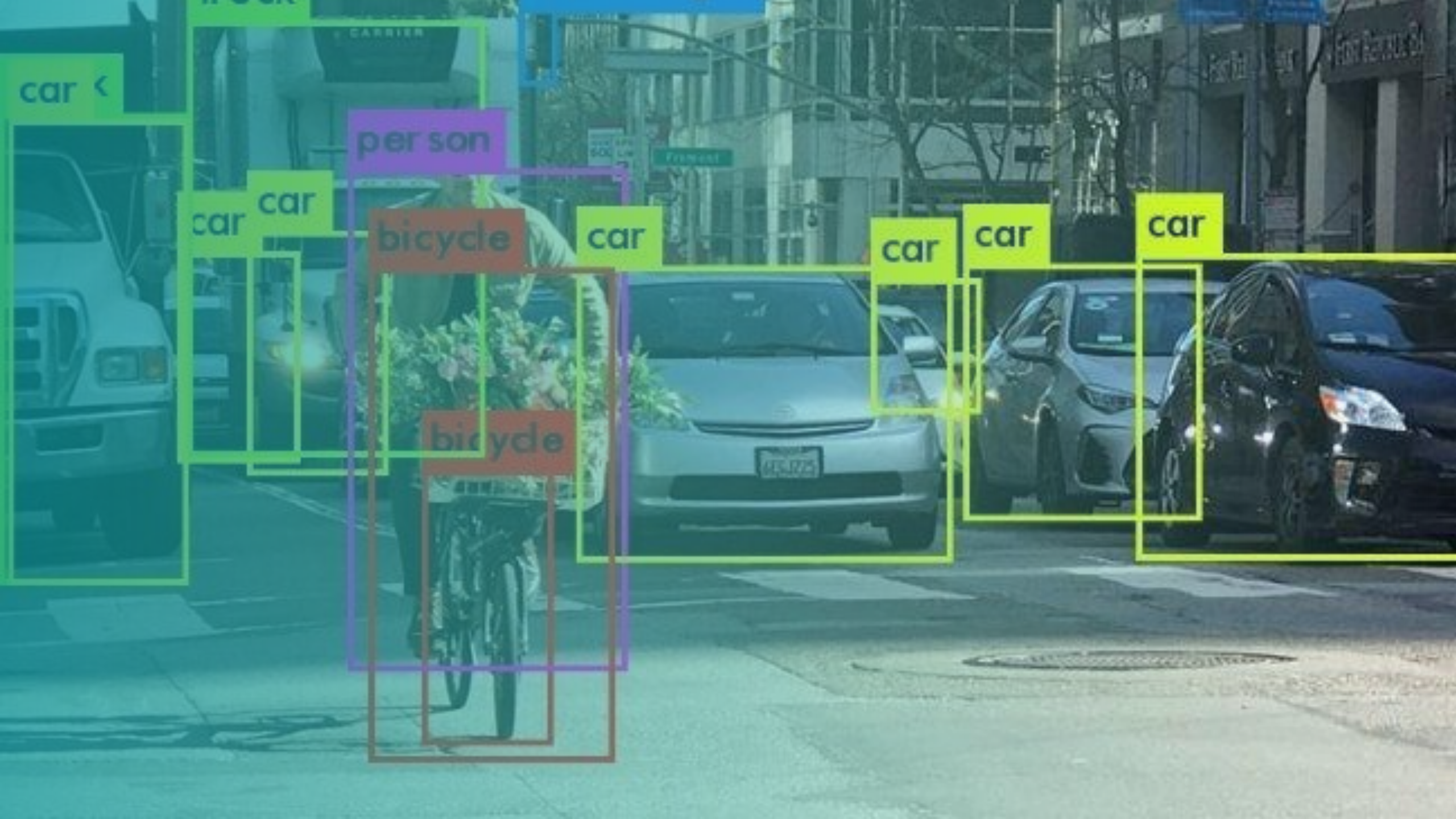
AI is older than you think.











car <

car

car

per son

bicycle

car

car

car

car

bicycle



# ALPHAGO



1950  
Turing test

1956  
"Artificial Intelligence"

AI winter

AI winter

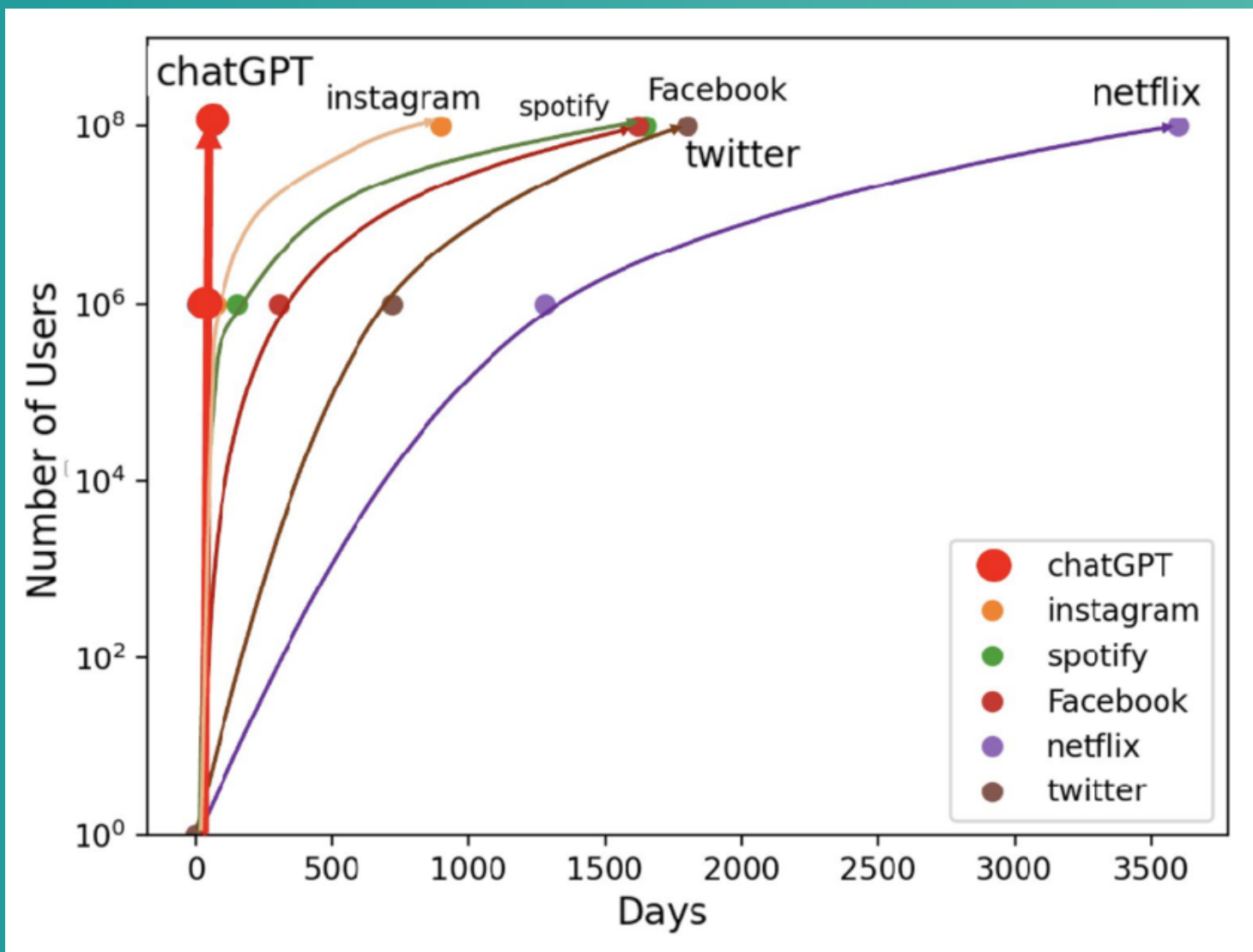
1997  
Deep Blue

2012  
Image recognition

2016  
AlphaGo

November 30, 2022









AT&T 3G

2:18 PM



Messages

Edit

where is granny I thought she was going to be here for thanksgiving?

Grandma is in the grave.

what grave? what are you saying?

Oops sorry garage

## What it's good at

Drafting

Summarizing

Explaining

Translating

Pattern finding

Brainstorming

## What to watch for

Hallucinations

No real time data

No common sense

No accountability



VISIONARIES

# Boosting technicians' expertise with AI



## AI, MORE OF A REALITY THAN YOU THINK

As technology keeps evolving at a frantic pace, the holy grail for most tech companies is Artificial Intelligence. And far from being the stuff of science fiction, AI is increasingly becoming a part of our day to day lives. Andy Stanford-Clark, master inventor at IBM tells us how this has the potential to revolutionize the way we live.

1/28/2026

## KONE elevates its automation and AI strategies with Microsoft Power Platform

## The elevator of the future is coming, but it might not be what you think

Intelligent Transport Systems Are Shaping the Building Technology of Tomorrow. Elevators, Escalators, and Moving Walkways Are Becoming the Connected Backbone of Smart, Efficient, and Sustainable Architecture.



Schindler

Home > Media

## Maximizing Fleet Efficiency in the Elevator Industry with AI


- KONE's AWS-powered IoT platform boosts predictive maintenance with real-time insights and scalability.
- Generative AI tools like Technician Assistant cut downtime and improve field service efficiency.
- Advanced IoT analytics helped KONE achieve 70% more fault detection and 40% fewer equipment issues.
- A scalable, cloud-based data foundation enables continuous innovation and smarter urban mobility.



*elevator*



The ~~train~~ has left.  
Are you on it?

A woman with blonde hair tied up, wearing glasses, a light-colored long-sleeved shirt, and a dark apron, stands in a grocery store aisle. She has a neutral expression. The shelves behind her are stocked with various products, including boxes of cereal, containers of yogurt, and other packaged goods. The lighting is bright, typical of a retail environment.

We've managed for years like this.  
It's fine.



“AI is fine, but I don’t really need it”

“We’ll see how this develops”

“Our industry is different”

Get curious.  
Begin.



Rommy van de Pol  
Innovation & AI @ nlmttd

[rommy@nlmttd.com](mailto:rommy@nlmttd.com)